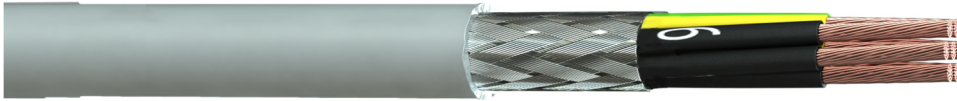


Description: Multicore Signal & Control Cable with Tinned Copper Wire Braid, Polyvinyl Chloride (PVC) Grey Sheath.



Construction

Conductor Material : Bare Copper, Class 5
 Insulation Material : Polyvinyl Chloride (PVC)
 Overall Screen : Tinned Copper Wire Braid (≥ 70% Coverage)
 Sheath Material : Polyvinyl Chloride (PVC)
 Sheath Colour : Grey
 Core Identification : 2 Cores – Black Numbered Cores
 : 3 Cores and above – Black Numbered Cores + Green/Yellow

Electrical Characteristics

Conductor Resistance : BS EN 60228
 Insulation Resistance : 200 MΩ.M
 Working Voltage : 300/500V
 Test Voltage (AC) : 2000V

Physical Characteristics

Bend Radius : Flexing 15 x OD
 : Static 10 x OD
 Temperature Rating : Flexing -5°C to +70°C
 : Static -20°C to +70°C

Standards

Flame Retardant : BS EN 60332-1-2
 RoHS3 Compliant : Yes
 CE Compliant : LVD (2014/35/EU), CPR (305/2011)
 CPR Classification : Eca (EN50575:2014+A1:2016)

Part No.	Cores x mm ²	Weight kg/km	OD mm	Part No.	Cores x mm ²	Weight kg/km	OD mm	Part No.	Cores x mm ²	Weight kg/km	OD mm
32000502-E00	2 x 0.5	42	5.4	32001002-E00	2 x 1.0	84	6.2	32002502-E00	2 x 2.5	148	8.6
32000503-E00	3 x 0.5	51	5.8	32001003-E00	3 x 1.0	110	6.5	32002503-E00	3 x 2.5	188	9.1
32000504-E00	4 x 0.5	61	6.5	32001004-E00	4 x 1.0	130	7.2	32002504-E00	4 x 2.5	236	9.9
32000505-E00	5 x 0.5	80	6.9	32001005-E00	5 x 1.0	156	8.1	32002505-E00	5 x 2.5	270	11.0
32000507-E00	7 x 0.5	98	7.4	32001007-E00	7 x 1.0	192	8.8	32002507-E00	7 x 2.5	340	11.9
32000512-E00	12 x 0.5	156	10.1	32001012-E00	12 x 1.0	265	11.6	32002512-E00	12 x 2.5	585	16.0
32000518-E00	18 x 0.5	215	11.8	32001018-E00	18 x 1.0	380	14.0	32002518-E00	18 x 2.5	725	19.1
32000525-E00	25 x 0.5	314	14.4	32001025-E00	25 x 1.0	475	15.8	32004003-E00	3 x 4.0	250	10.4
32000702-E00	2 x 0.75	56	5.9	32001502-E00	2 x 1.5	97	7.5	32004004-E00	4 x 4.0	302	11.6
32000703-E00	3 x 0.75	70	6.2	32001503-E00	3 x 1.5	125	7.9	32004005-E00	5 x 4.0	370	12.9
32000704-E00	4 x 0.75	95	6.7	32001504-E00	4 x 1.5	165	8.8	32006003-E00	3 x 6.0	285	13.1
32000705-E00	5 x 0.75	130	7.5	32001505-E00	5 x 1.5	193	9.1	32006004-E00	4 x 6.0	412	14.2
32000707-E00	7 x 0.75	168	8.0	32001507-E00	7 x 1.5	245	10.4	32006005-E00	5 x 6.0	505	15.5
32000712-E00	12 x 0.75	232	11.0	32001512-E00	12 x 1.5	365	13.9	32010004-E00	4 x 10	620	17.5
32000718-E00	18 x 0.75	315	12.7	32001518-E00	18 x 1.5	553	15.6	32010005-E00	5 x 10	796	19.7
32000725-E00	25 x 0.75	418	14.8	32001525-E00	25 x 1.5	720	20.8	32016004-E00	4 x 16	1090	20.5
								32016005-E00	5 x 16	2070	22.4